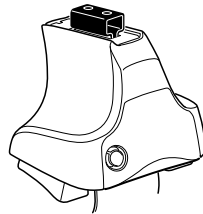
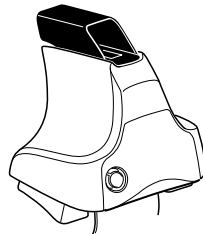
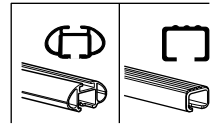


Kit 1628

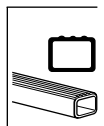
NISSAN Elgrand, 5-dr MPV, 10-
NISSAN Quest, 5-dr Mini Van, 11-



754 Rapid System
480R Rapid Traverse (North America)



480 Traverse (North America)



Max.
50 kg
Max.
110 lbs

THULE
Kit XXXX
instructions
THULE

x1

754 Rapid System

480R Rapid Traverse (North America)

x4

x1

480 Traverse (North America)

x4

x2

x2
 23 mm

x2
 17 mm

x2
 23 mm

x4

x4

(North America)

x2
 23 mm

x2

x2

x2

1148

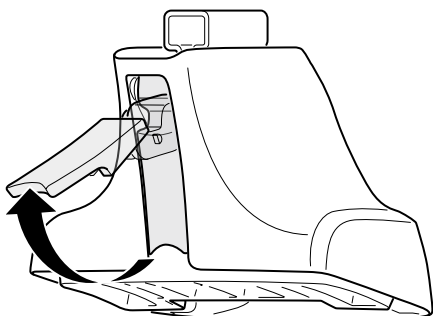
x4

360

x4

x1

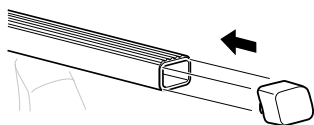
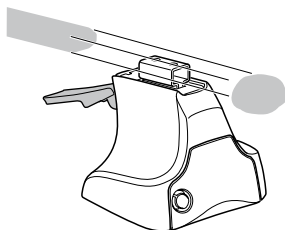
1



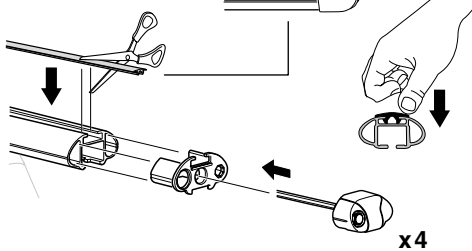
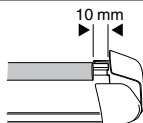
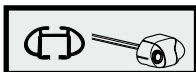
2



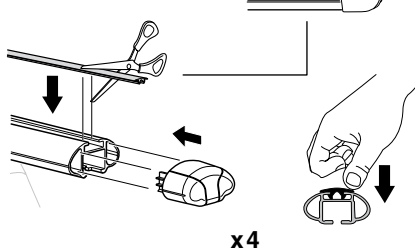
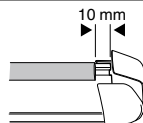
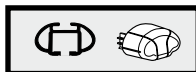
754 Rapid System
480R Rapid Traverse
(North America)



x4



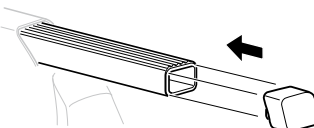
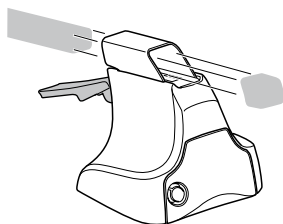
x4



x4

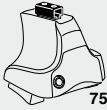


480 Traverse
(North America)

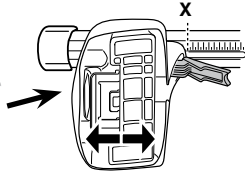


x4

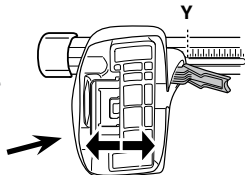
3



754 Rapid System



	X
NISSAN Elgrand, 5-dr MPV, 10-	45
NISSAN Quest, 5-dr Mini Van, 11-	45



	Y
NISSAN Elgrand, 5-dr MPV, 10-	43,5
NISSAN Quest, 5-dr Mini Van, 11-	43,5

3

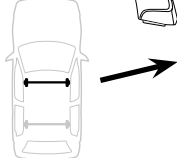


480R Rapid Traverse

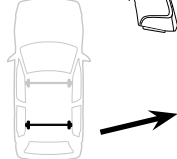
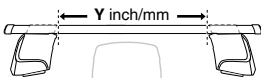


480 Traverse

(North America)

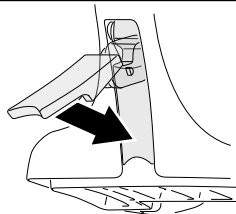


	X inch	X mm
NISSAN Elgrand, 5-dr MPV, 10-	43 ³/₈ "	1101 mm
NISSAN Quest, 5-dr Mini Van, 11-	43 ³/₈ "	1101 mm



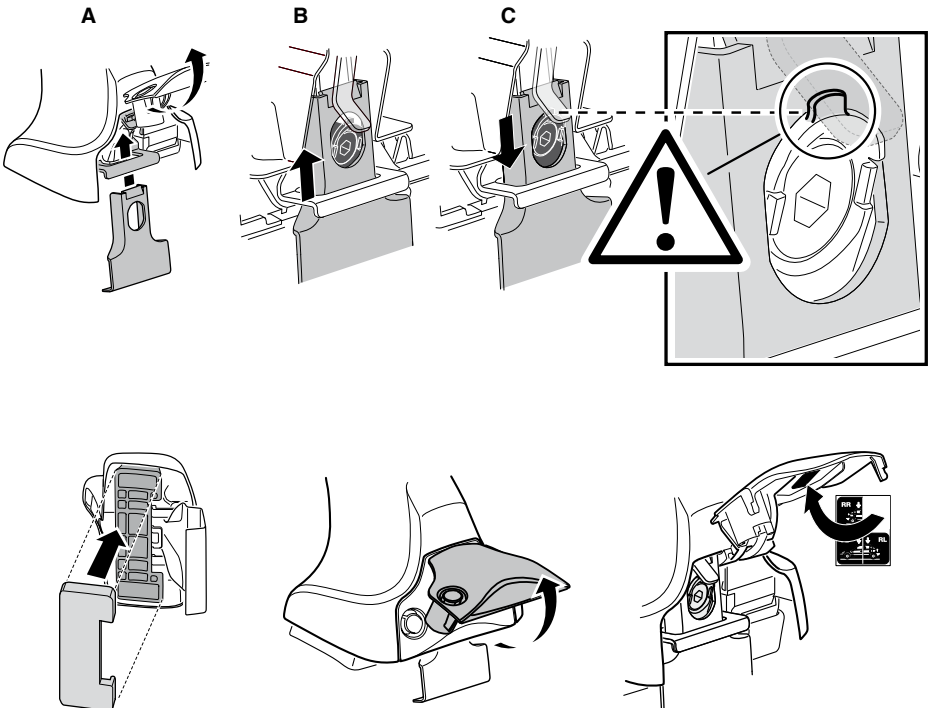
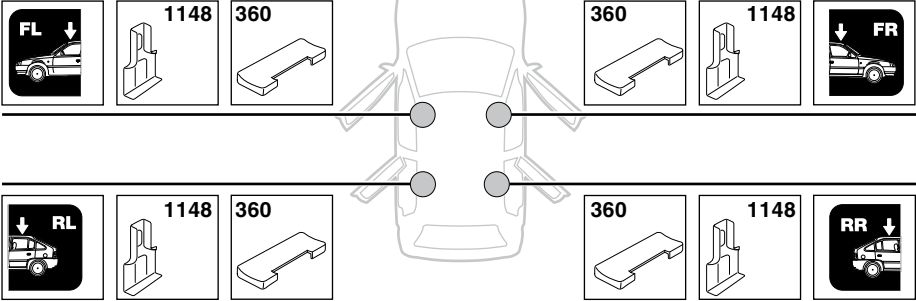
	Y inch	Y mm
NISSAN Elgrand, 5-dr MPV, 10-	42 ³/₄ "	1086 mm
NISSAN Quest, 5-dr Mini Van, 11-	42 ³/₄ "	1086 mm

4

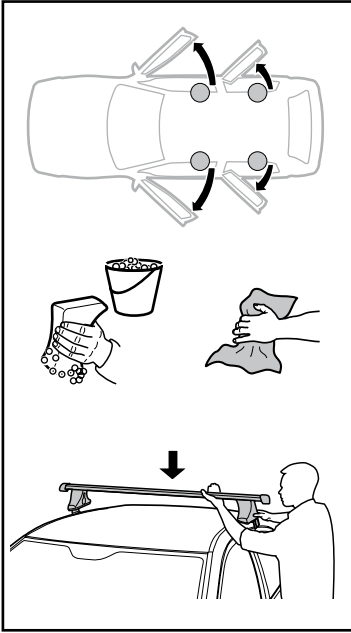


5

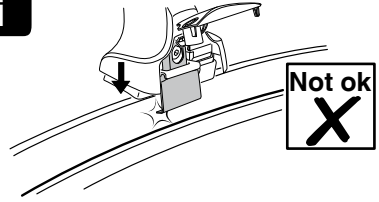
NISSAN Elgrand, 5-dr MPV, 10-
NISSAN Quest, 5-dr Mini Van, 11-



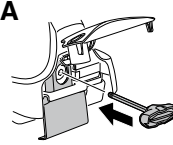
6



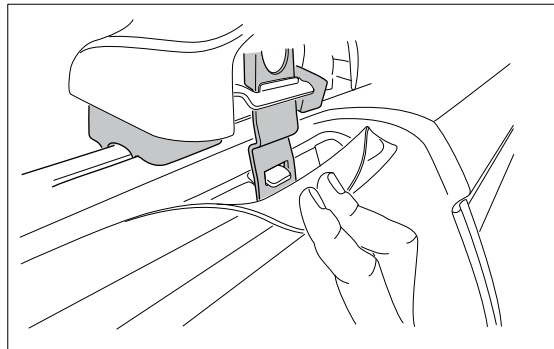
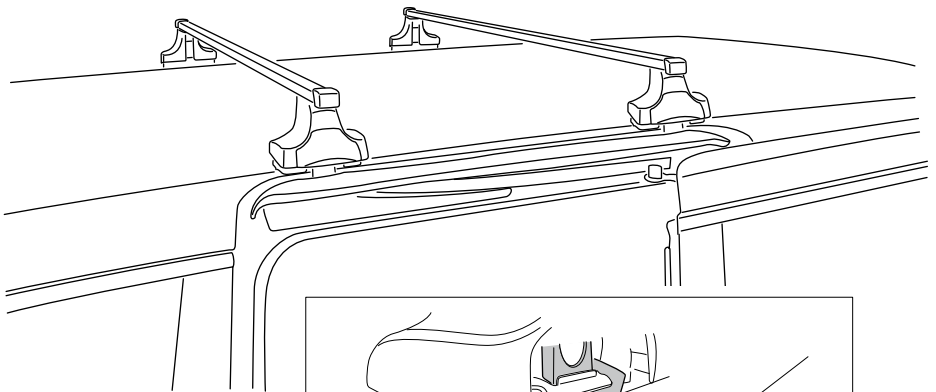
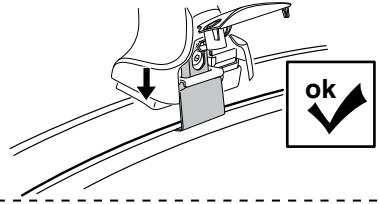
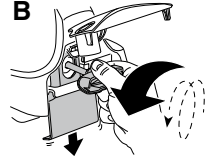
i

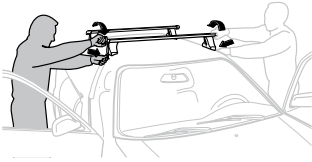


A



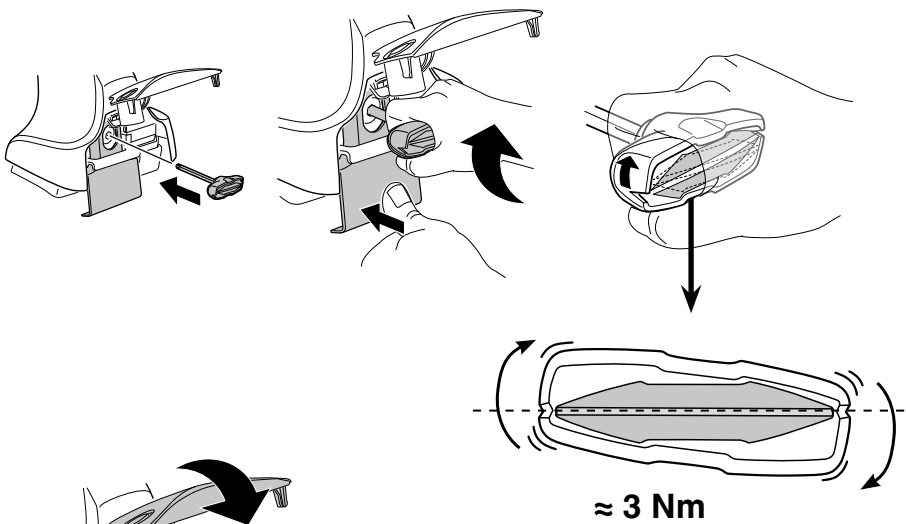
B



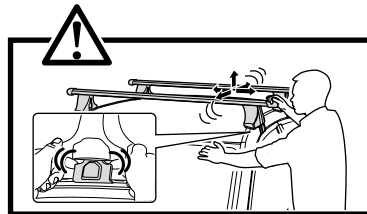
7

GB/US Tighten alternately
D Die Schrauben abwechselnd anziehen
F Serrer alternativement chaque côté
NL Afwisselend aan de linker- en de rechterkant aandraaien
I Alternare il serraggio delle viti
E Apretar alternativamente
PT Aperte alternadamente
S Dra åt växelvis
FIN Kierrä vuorotellen
EST Pinguldage vaheldumisi
LAT Pieļieciēt pamišus
LIT Užsukinėkite pakaitomis
PL Śruby dokręcaj naprzemiennie
RU Затягивайте попеременно

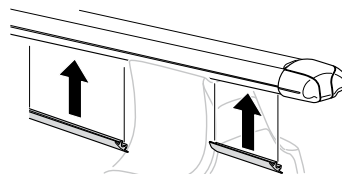
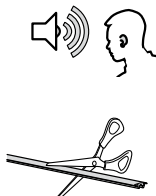
CZ Pokrétla багаžníka dokręcaj dokręcaj naprzemiennie.
SK Dofahajte striedavo
SLO Privijajte izmenično.
HR Naizmjerno zategnite
HU Egyarástól függetlenül szorítandó
GR Σφιγγέτε εναλλάξ
TR Dönüşümlü sıkın
中文 交替拧紧
한국어 번갈아 가며 조이십시오.
日本語 交互に締め付けてください。
ไทย ชั่งในแบบสลับ

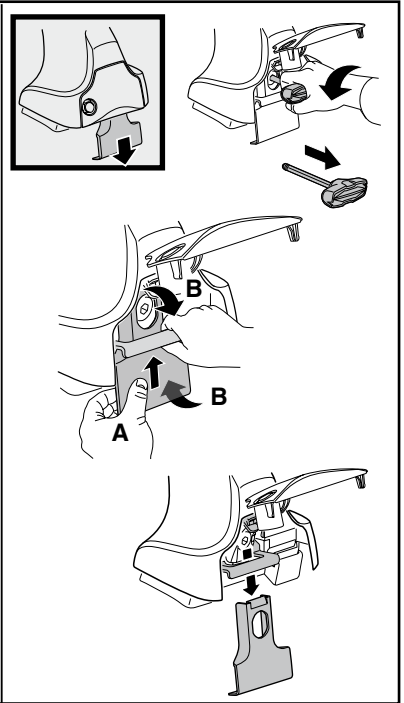
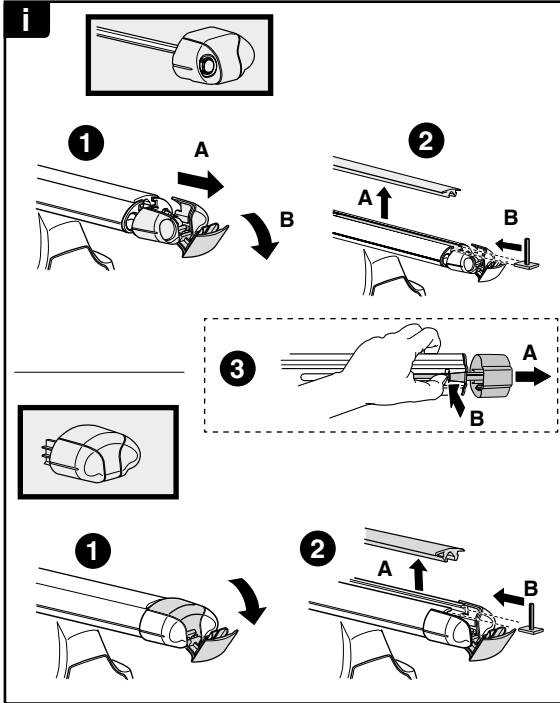


≈ 3 Nm

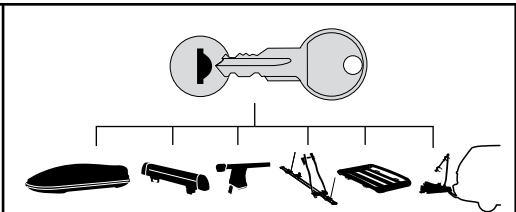
**8**

x1
17 mm





THULE
SWEDEN
**ONE
KEY
SYSTEM**



		(x4)
		(x6)
		(x8)
NA		(x10)
EUR		(x12)
ASIA		



WW ▶ Thule Sweden AB, Box 69, 330 33 Hillerstorp, SWEDEN
NA ▶ Thule Inc., 42 Silvermine Road, Seymour, Connecticut 06483, USA

info@thule.com
customer.service@thule.com

www.thule.com