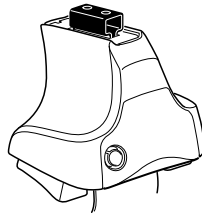


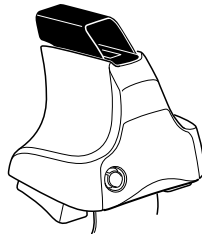
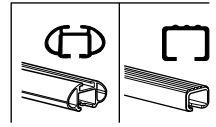
Kit 1587

NISSAN Rogue, 5-dr SUV, *08–

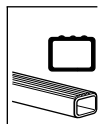
***North America**



754 Rapid System
480R Rapid Traverse (North America)



480 Traverse (North America)



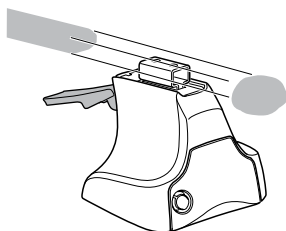
1



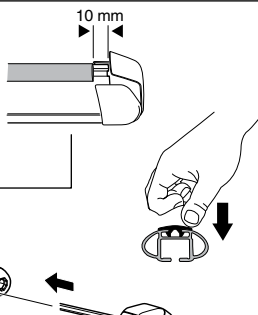
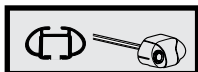
2



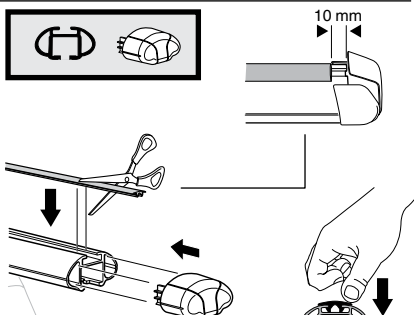
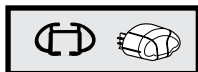
754 Rapid System
480R Rapid Traverse
(North America)



x4



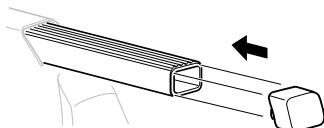
x4



x4



480 Traverse
(North America)

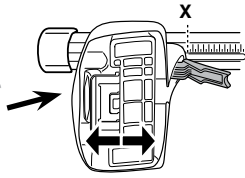


x4

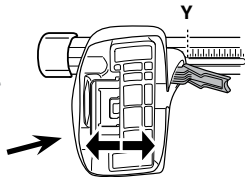
3



754 Rapid System



	X
NISSAN Rogue, 5-dr SUV, *08-	39,5



	Y
NISSAN Rogue, 5-dr SUV, *08-	37

3

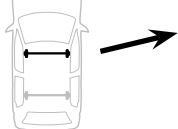


480R Rapid Traverse

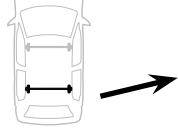


480 Traverse

(North America)

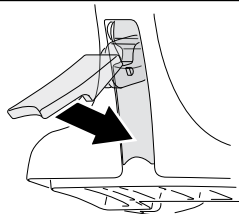


	X inch	X mm
NISSAN Rogue, 5-dr SUV, *08-	41 1/4"	1048 mm



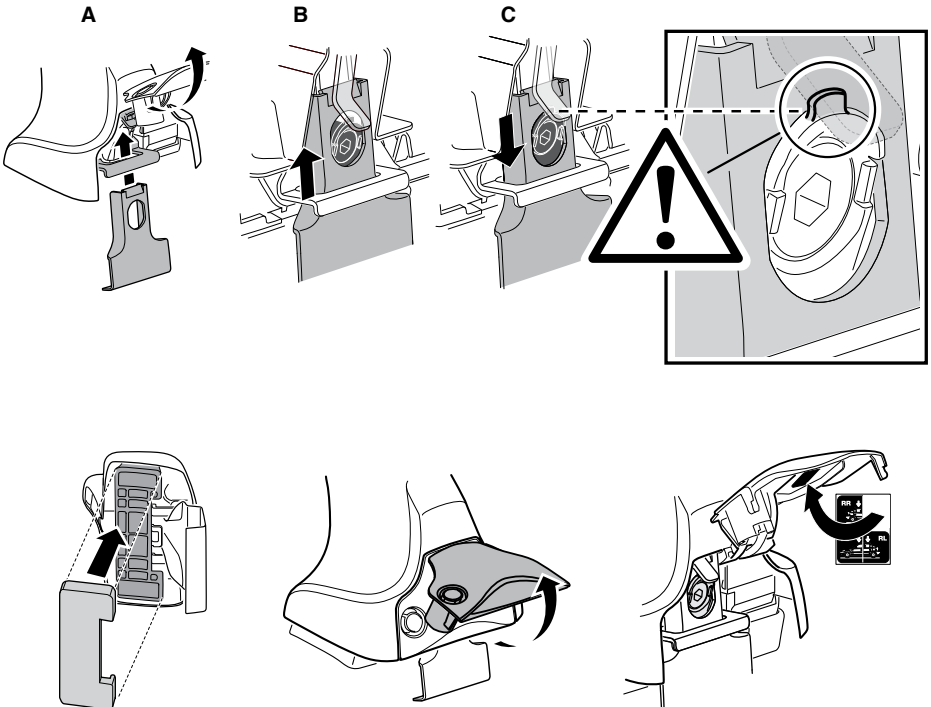
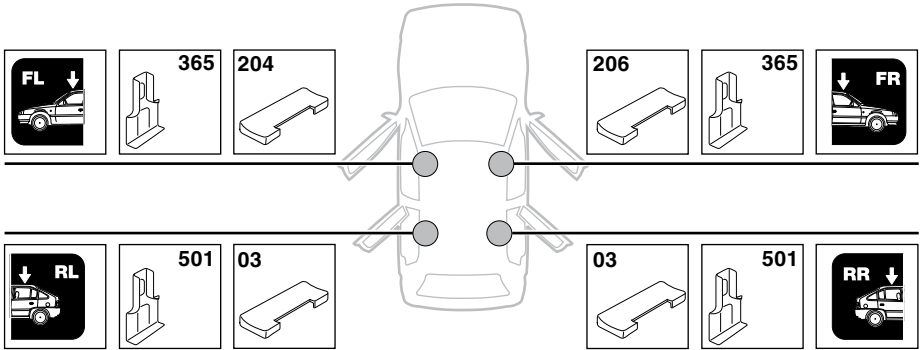
	Y inch	Y mm
NISSAN Rogue, 5-dr SUV, *08-	40 1/8"	1019 mm

4

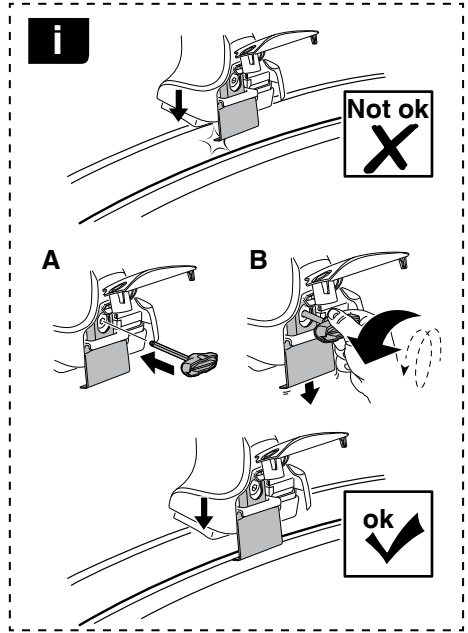


5

NISSAN Rogue, 5-dr SUV, *08-

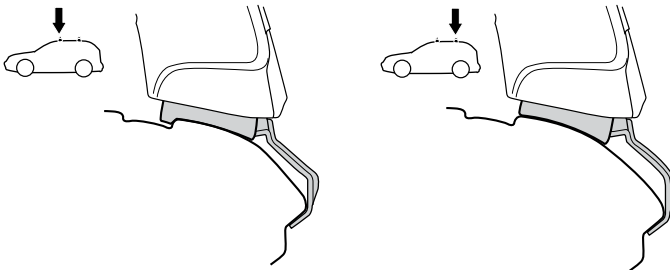
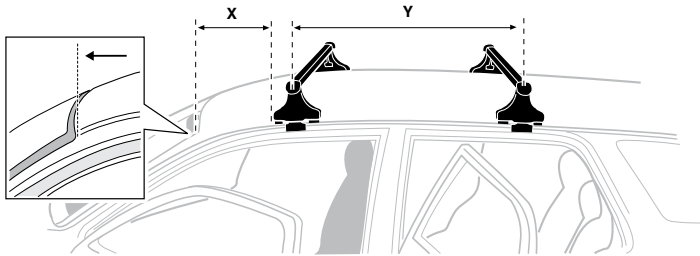


6



NISSAN Rogue, 5-dr SUV, *08-

X mm	Y mm	X inch	Y inch
305 mm	660 mm	12"	26"



7



GB/US Tighten alternately
 D Die Schrauben abwechselnd anziehen
 F Serrer alternativement chaque côté
 NL Afwisselend aan de linker- en de rechterkant aandraaien
 I Alternare il serraggio delle viti
 E Apertar alternativamente
 PT Aperte alternadamente
 S Dra åt växelvis
 FIN Kierrä vuorotellen
 EST Pinguldage vaheldumisi
 LAT Pieļieciet pamišus
 LIT Užsukinėkite pakaitomis
 PL Śruby dokręcaj naprzemiennie
 RU Затягивайте попеременно

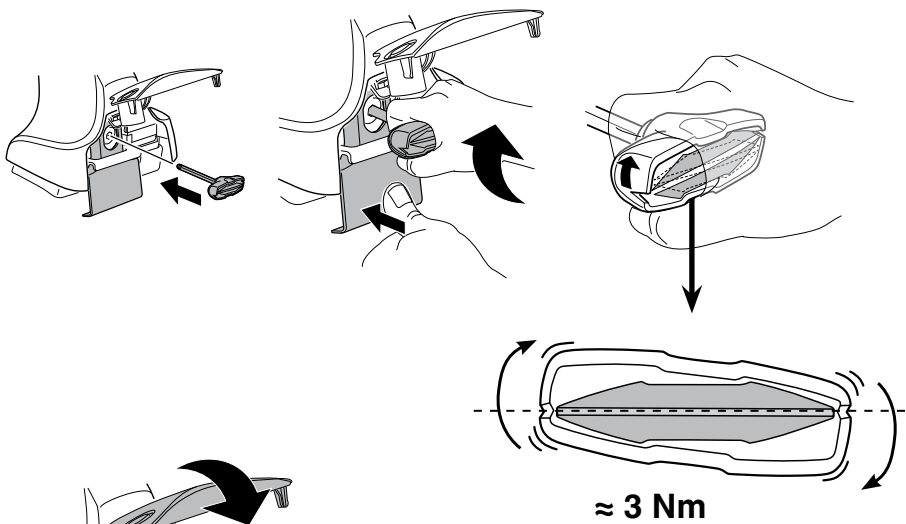
CZ Pokręťta bagażnika dokręcaj naprzemiennie.
 SK Dofahajte striedavo
 SLO Privijajte izmenično.
 HR Naizmjerno zategnite
 HU Egymástól függetlenül szorítandó
 GR Σφιγίγτες εναλλάξ
 TR Dönüşümlü sıkın

中文 交替拧紧

한국어 번갈아 가며 조이십시오.

日本語 交互に締め付けてください。

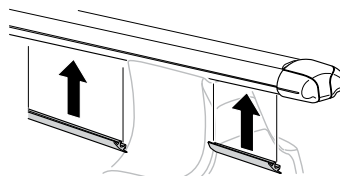
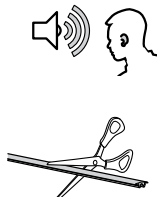
ไทย ชันในแบบสลับ

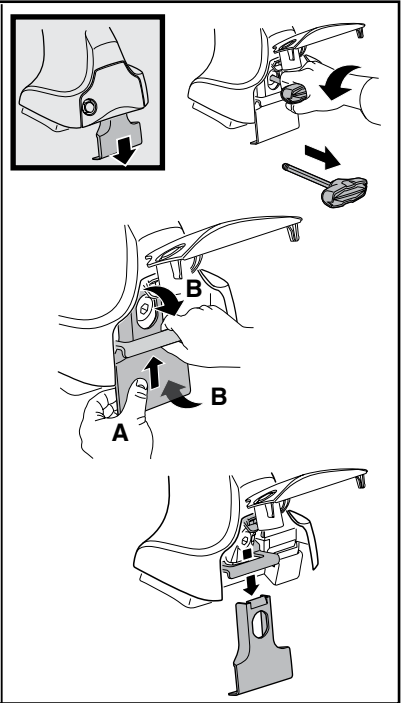
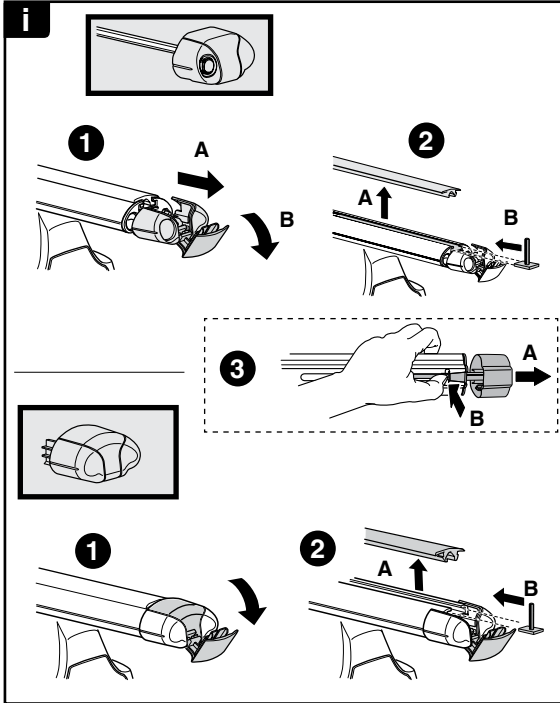


8



x1
17 mm





THULE
SWEDEN
**ONE
KEY
SYSTEM**



- 544** (x4)
 - 596** (x6)
 - 588** (x8)
 - 510** (x10)
 - 452** (x12)
- NA
EUR
ASIA

